

# LOS-CCC-CP

German Engineering. Out of the ordinary.

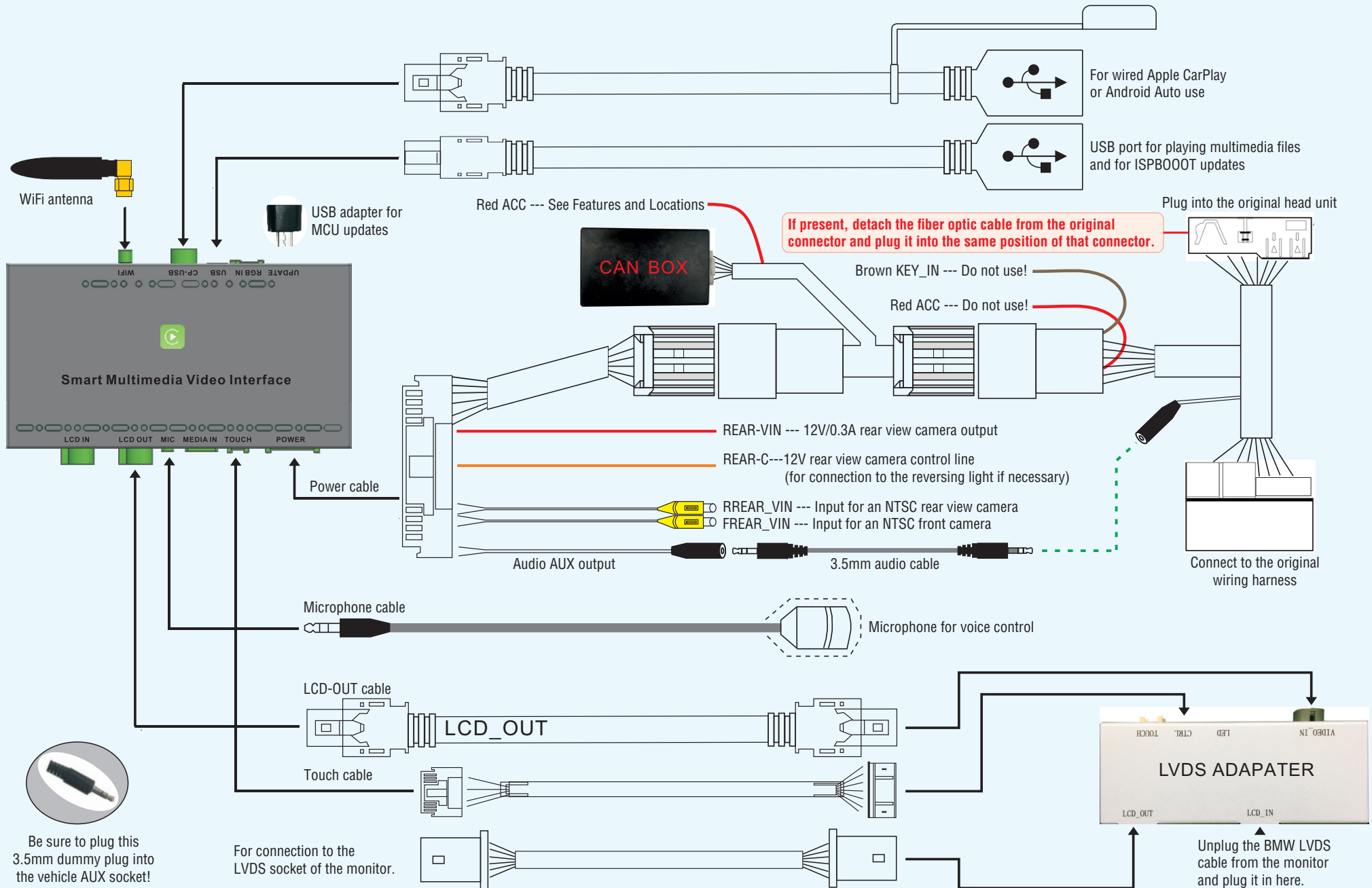
Version 1



*Before attempting to connect or operate this product, please read the instructions completely.*

## *Installation Manual*

# Wiring diagram LDS-CCC-CP

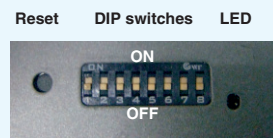


### DIP switch settings

The DIP switches are divided into two areas. The first determines the monitor resolution and the associated CAN bus protocol. An incorrect setting always means an incorrect CAN bus protocol, which can lead to vehicle malfunctions. Therefore, always make sure that the setting is correct. The second area determines the general settings for the rear view camera.

DIP switch	Status	Description
4	ON	Guide lines off (for retrofit camera)
	OFF	Guide lines (for retrofit camera, only if supported by the vehicle)
5	ON	Manual iDrive controller without end stop
	OFF	iDrive controller with vibration response when turning and end stop
8	ON	OEM rear view camera or no camera
	OFF	Retrofit rear view camera (together with DIP switch 4)
The switches 1, 2, 3, 6 and 7 have no function, please set to OFF.		

After setting the DIP switches, please be sure to press the reset button for about 3 seconds. Otherwise the settings will not take effect!



### Operation

Before you switch to the LDS interface, you must switch on the AUX input in your multimedia system. Otherwise you will have no sound.

Press and hold the MENU button (1) for a few seconds to switch to the LDS interface. Pressing it again takes you back to the BMW interface.

Briefly press the iDrive controller (2) to open Siri or Hey Google for voice control.

The entire operation is carried out via the iDrive control knob (2).

Use the steering wheel buttons (3) to select track forward (▶) and backward (◀).

If you engage reverse gear, the interface switches to the reversing camera\*. If you leave reverse gear, the interface switches to the front camera\* for 10 seconds.

\*If available.



### Wireless use of Apple CarPlay and Android Auto

The minimum requirements for wireless use are:

- Apple CarPlay: iPhone 5
- Android Auto : Android 11, Android Auto 4.8 or higher, WiFi 5GHz. Danger! Some manufacturers, such as Samsung, have their own Android-based OS. Under certain circumstances, wireless use is not possible.

### Pair smartphone

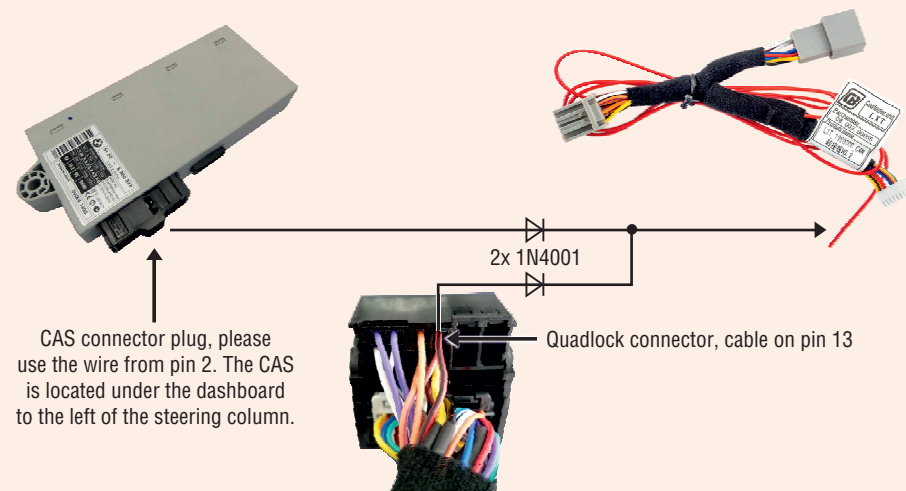
- 1) Start the LDS interface and select " Settings"
- 2) Scroll down to " Smartphone" or " Smart device" and switch " Android device" from " AutoLink" to " Android Auto" . " Apple Device" must be set to " CarPlay" . Then go back to Settings.
- 3) Delete the saved connection to the vehicle's hands-free system on your smartphone.
- 4) Turn off WiFi and Bluetooth on your smartphone.
- 5) In the LDS settings, go to " Bluetooth" ( not BT ! ) and start the device search.
- 6) Now turn on WiFi and Bluetooth in your smartphone immediately.
- 7) The LDS interface finds your smartphone, which you please select.
- 8) A dialog for Bluetooth pairing appears on the smartphone display, which you confirm with " Pair" or " OK" .
- 9) A second dialog now appears asking whether you also want to use CarPlay or Android Auto. Confirm that. Danger! With some Android devices, the second dialog is missing, the confirmation then takes place automatically.
- 10) After successful pairing, the LDS interface automatically switches to the CarPlay or Android Auto interface after a few seconds. If this does not happen automatically, exit the settings and start CarPlay or Android Auto manually in the LDS menu.
- 11) Now reestablish the connection between your smartphone and the vehicle's hands-free system, because the LDS interface is never used for telephony, but only serves as a remote control for the telephone. (For an iPhone, please go to Settings > Accessibility > Type > Audio output > change the value from " Automatic" to " Bluetooth Headset" here.)

If the pairing did not work, delete all connections between the interface and the smartphone in both devices and repeat the procedure.

### Features and Locations

With a retrofitted front camera, the switchover must be activated in the LDS settings.

Please connect the red ACC line of the CAN box to the CAS to the cable on pin 2 and on the Quadlock connector to the cable on pin 13. The cables must be separated from each other with two diodes (1N4001).



## FAQ

**Q:** Why is the screen sometimes black and the LDS interface cannot be operated when I get into the vehicle?

**A:** A smartphone can only connect to one WiFi network at a time. If you get into the vehicle and the smartphone is still connected to the home WLAN, the automatic connection with the LDS interface cannot take place. To force the pairing, simply connect the smartphone via a USB cable. As soon as the Apple CarPlay or Android Auto interface appears, the cable can be unplugged again for wireless operation.

**Q:** Can I wirelessly mirror my smartphone.

**A:** No, mirroring is wired only. To do this, go to the LDS settings > Smartphone (or intelligent device) and change the value from Android Auto to Autolink under Android device, or from Carplay to Autolink under Apple device. Only now do you connect your smartphone to the LDS interface using a USB cable. Please note that if you want to use Apple CarPlay or Android Auto later, you have to reset the values in the same menu.

**Q:** Does the LDS interface replace a hands-free device and can you also use it to make phone calls?

**A:** The supplied microphone is only used for voice control. You will continue to make calls using the vehicle's hands-free system.

**Q:** Is it possible to connect an HDMI signal source to the LDS interface via the HDMI socket and display it on the vehicle's multimedia system?

**A:** The HDMI socket is not an HDMI input and is used to connect future peripherals.

**Q:** Does the LDS interface feed image and sound into the vehicle's multimedia system?

**A:** No, only the image is fed. To feed in the sound, your vehicle must have an AUX input or be able to generate an AUX input via USB.

**Q:** Can I, for example, use Google Maps via the LDS interface and at the same time listen to the radio or CD in the vehicle via the multimedia system?

**A:** Yes, but then you navigate without sound, since the source selection of the multimedia system is no longer set to AUX, but to radio, for example! That's why we recommend using Radio.de or the TuneIn APP to listen to the radio via the LDS interface. This gives you better sound quality and you don't have to do without the navigation announcements.

**Q:** Can wireless Android Auto be used with all Android smartphones?

**A:** The minimum requirements are Android 11 with Android Auto 4.8 or higher and WiFi 5GHz. Danger! Some manufacturers, such as Samsung, have their own Android-based OS. Under certain circumstances, wireless use is not possible.

**Q:** Is it also possible to turn on the front camera manually?

**A:** The front camera is automatically activated for 10 seconds when you leave reverse gear. The requirements are either an OEM front or 360° camera, or a retrofitted front camera from the accessories, e.g. the Ampire KIP100-F. Please note the LDS settings or the DIP switch settings.