

# Users Manual

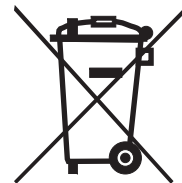
**LOS INTERFACE**

## Precautions

- Pay utmost attention if you install the LDS Interface into the driver's compartment.
- Use only in cars with a 12 Volt negative ground.
- Before wiring, disconnect the cable from the negative battery terminal to avoid short circuits or electrical shocks. Make the correct connections.
- Do not damage pipe or wiring when drilling holes.
- Arrange the wiring so it is not crimped or pinched by a sharp metal edge.
- Do not install the LDS Interface in locations which might hinder vehicle operations and do not install in locations with any moisture. Use the installation materials provided with the LDS Interface.
- Do not use bolts or nuts in the brake, airbags or other safety relevant systems to make ground connections.
- Attention! This LDS Interface is developed for motor vehicle use only.
- WARNING: DO NOT WATCH MOVIES WHILE DRIVING TO AVOID DANGER!

## Environmental Reference

- Old electronic devices do not belong in the garbage can.
- If you later want to dispose of this device, remove all cables and batteries and dispose of them separately at a recycling facility in your area.



### **Environmental instructions and information on the disposal of electrical and electronic equipment including batteries (applicable to countries that have adopted a separate collection system)**

If you want to dispose of this product, do not dispose of it with your normal household waste. There is a separate collection system for used electronic equipment in accordance with legal requirements that require appropriate treatment, recovery and recycling. Contact your local authority for details on finding a recycling facility in your area. Proper recycling and disposal helps to conserve resources and prevent harmful effects on our health and the environment.

## OPERATION INSTRUCTION

### HOW TO SWITCH FROM ORIGINAL TO ADD ON INTERFACE

Remark: Take BMW NBT system for example, other models pls check the wiring diagram.

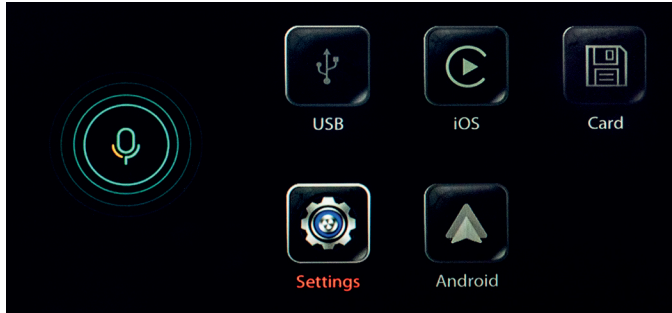
- 1) Press and hold "BACK" button nearby Knob for 3S to switch menu.
- 2) Short press "MENU" button to open "Siri".
- 3) iDrive knob to control up/down/right/left/ok.



**NOTE!** Make sure source switch to "AUX" mode on original car stereo for audio transmission before using the integration.

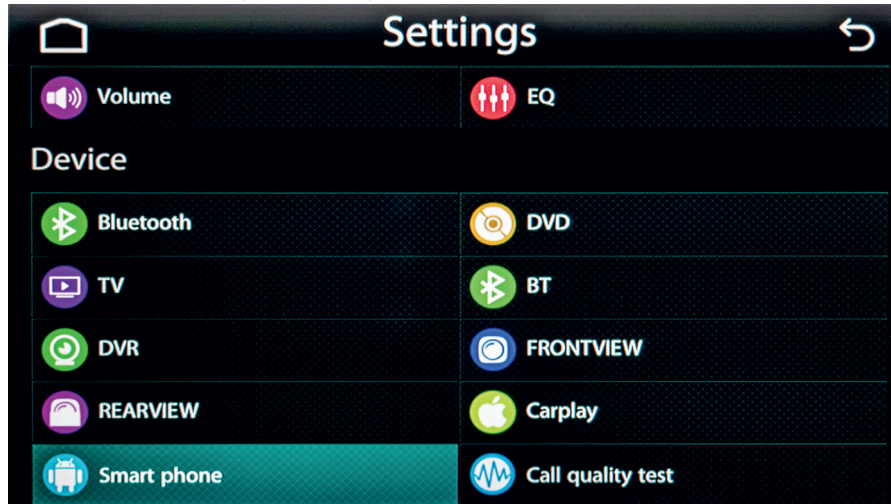
# OPERATION INSTRUCTION

## ADD ON UI



## SETUP

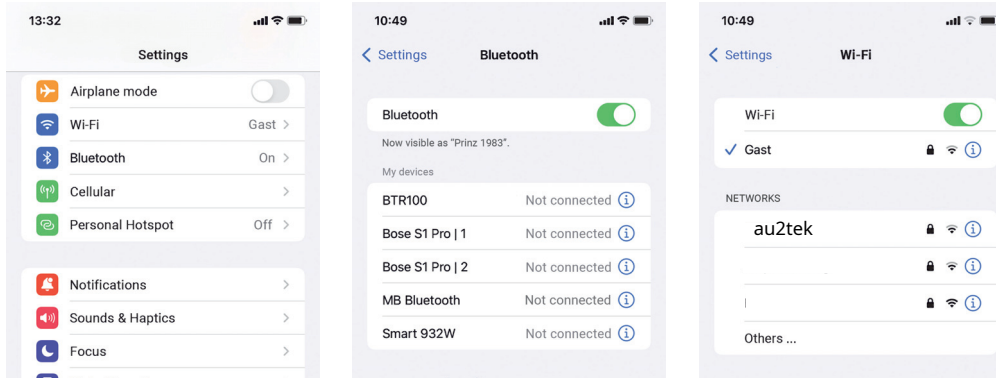
Setting Language/Media(Volume& EQ)/Device.





# Wireless Apple Carplay

1. Switch off the LDS interface (switch off the ignition and wait for the bus to stand still)
2. In the meantime, disconnect the Bluetooth® connection to the vehicle HFCK in the iPhone, then switch off Bluetooth® and Wlan.
3. Switch on the ignition and boot the LDS interface.
4. Now switch on Wlan and Bluetooth® again.



5. Then go to Settings> Bluetooth®> Select Discover in the main menu of the LDS interface. The LDS interface does look for the iPhone not the other way around!

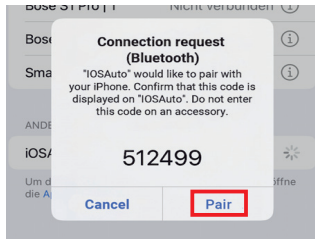


# Wireless Apple Carplay

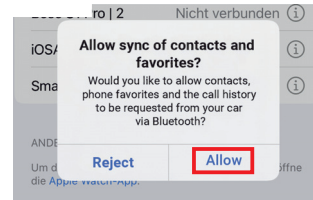
6. Then choose Select the found iPhone. Wait 3 to 5 seconds. The following “Are you sure you want to pair ?“ Window appears. Confirm this with “Pair“.



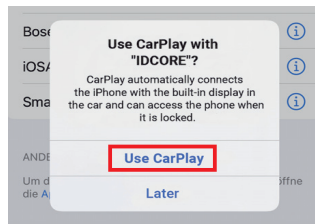
7. The "Connection request (Bluetooth)" window appears on the iPhone. Confirm this with "Coupling".



8. The "Allow sync of contacts and favorites" window opens. Confirm this with "Allow".

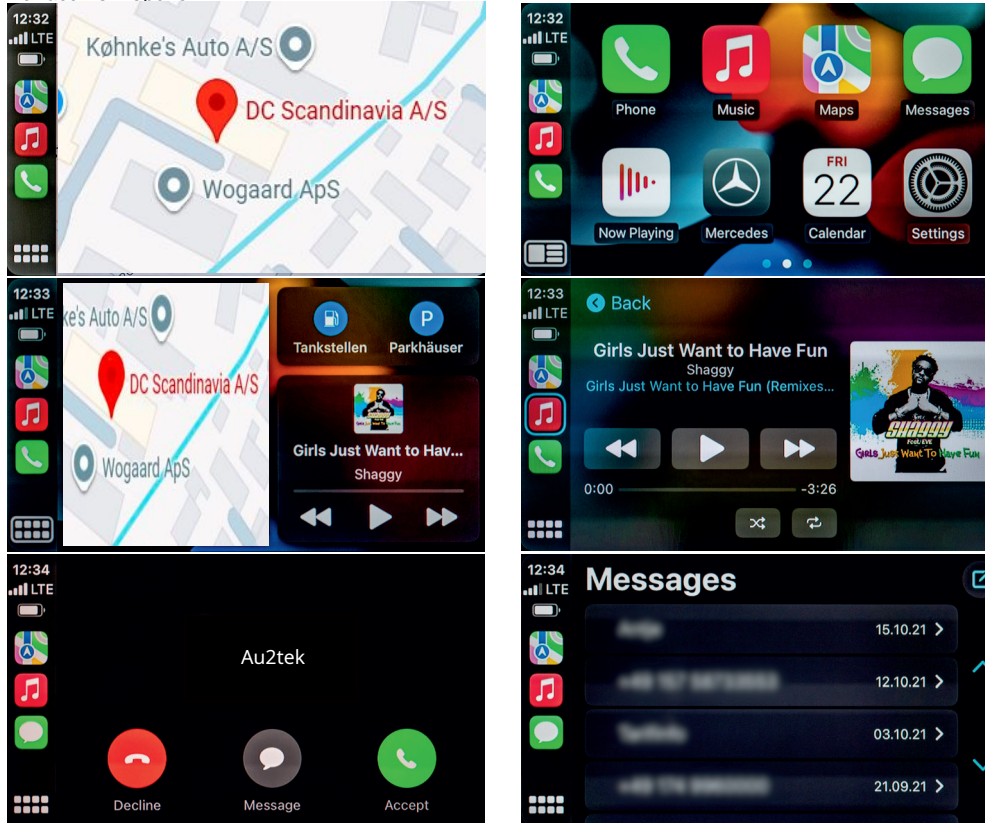


9. The "Use CarPlay with" IDCORE " ? " Window opens. Confirm this with "Use CarPlay".



## Wireless Apple Carplay

10. The Apple Carplay interface now opens.



11. Now the iPhone must be reconnected to the vehicle's Bluetooth® HFCK without disconnecting from the LDS interface. Because calls are still made via the original HFCK, Apple Carplay is only used for control.

## Wireless Apple Carplay

---

12. supports other apps on your iPhone — like your favorite audio, messaging, and voice apps.



Whatsapp



Telegram



Spotify



Podcast



Audible



Apple Music

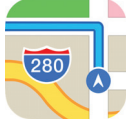


Google Play Music

13. supports third-party navigation apps, so you have even more choices to get where you'd like to go.



Google Maps



Apple Maps



Waze

## How to disconnect your iPhone from Carplay

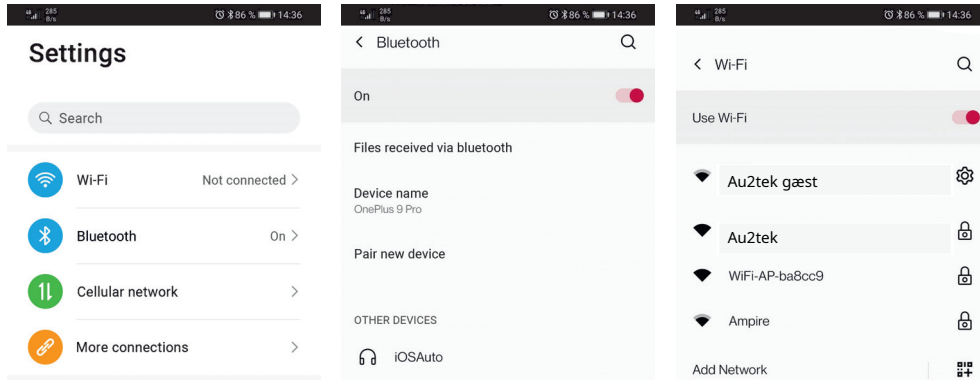
---

1. Click " Auto" in the CarPlay interface and exit to the main menu of the system.
2. Select device management from the submenu of "Device", click device in device management, wireless CarPlay will disconnect, and click again to reconnect.
3. How to reconnect the CarPlay
  - (1) When the bluetooth® /Wlan Settings of the mobile end remain unchanged, restart and close the vehicle, and the wireless CarPlay will automatically reconnect.
  - (2) If the bluetooth® /Wlan Settings on the phone are changed, please delete the device from the device list and reconnect as you did the first time.

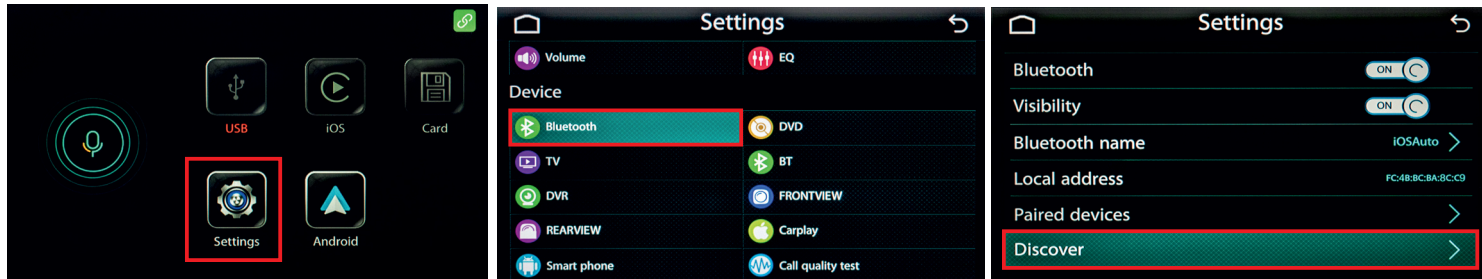
# Wireless Andriod Auto

**Note: Wireless Andriod Auto is only supported on devices with Andriod 11 or with the devices from the device list on page 34.**

1. Switch off the LDS interface (switch off the ignition and wait for the bus to stand still)
2. In the meantime, disconnect the Bluetooth connection to the vehicle HFCK in the smartphone, then switch off Wlan and Bluetooth®.
3. Switch on the ignition and boot the LDS interface.
4. Switch on WLAN and Bluetooth®.

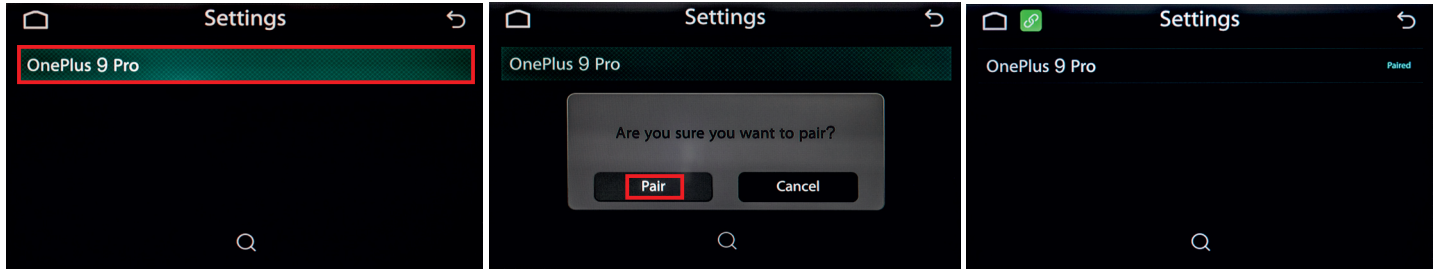


5. Then go to Setting> Bluetooth®> Select Discover in the main menu of the LDS interface. The LDS interface is looking for the smartphone and not the other way around!

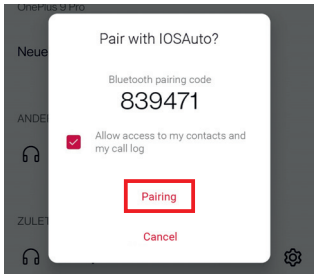


## Wireless Andriod Auto

6. Now select the smartphone that was found. Wait 3 to 5 seconds. The following “Do you need to pair?” Window appears. Confirm this with "Pair".

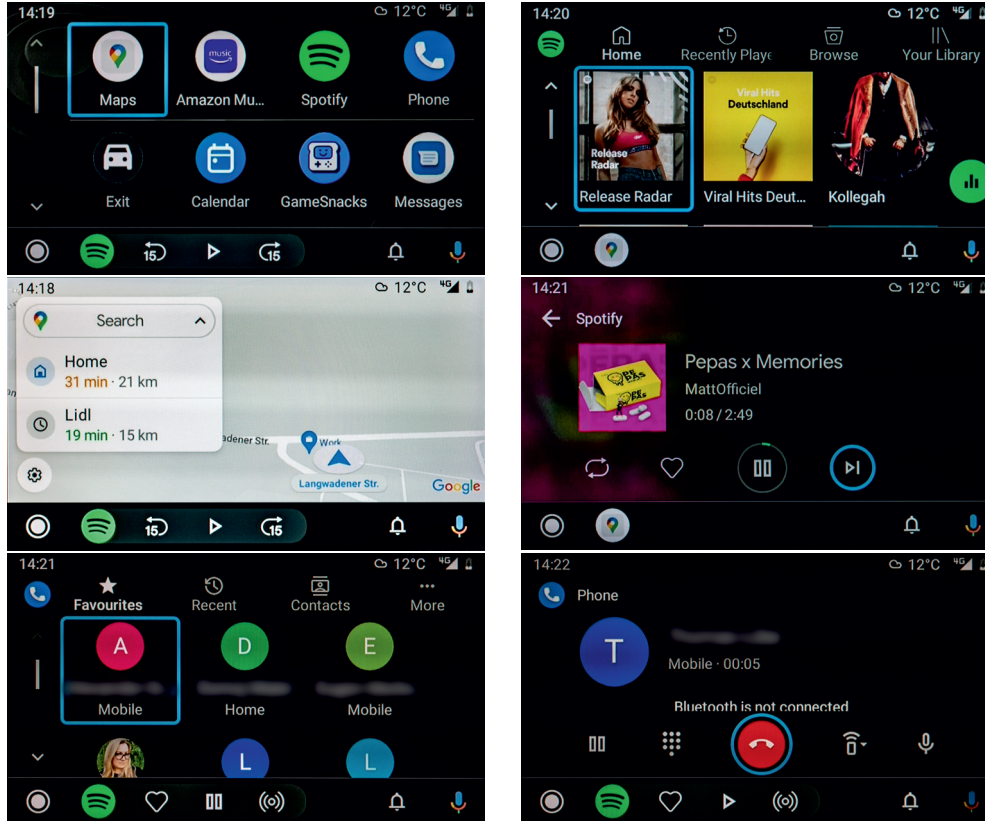


7. The "Pair with iOS car?" Window appears on the smartphone> confirm with "Pairing".



## Wireless Android Auto

### 8. Android Auto Interface



9. Now the iPhone must be reconnected to the vehicle's Bluetooth® HFCK without disconnecting from the LDS interface. Because calls are still made via the original HFCK, Apple Carplay is only used for control.



## Wireless Andriod Auto

10. Android Auto makes it easy to access your favorite music, media, and messaging apps in the car. Check out all the Apps for Android Auto at [g.co/androidauto](http://g.co/androidauto), such as :



Whatsapp



Telegram



Spotify



Podcast



Audible

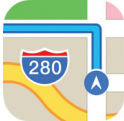


Google Play Music

11. supports third-party navigation apps, so you have even more choices to get where you'd like to go.



Google Maps



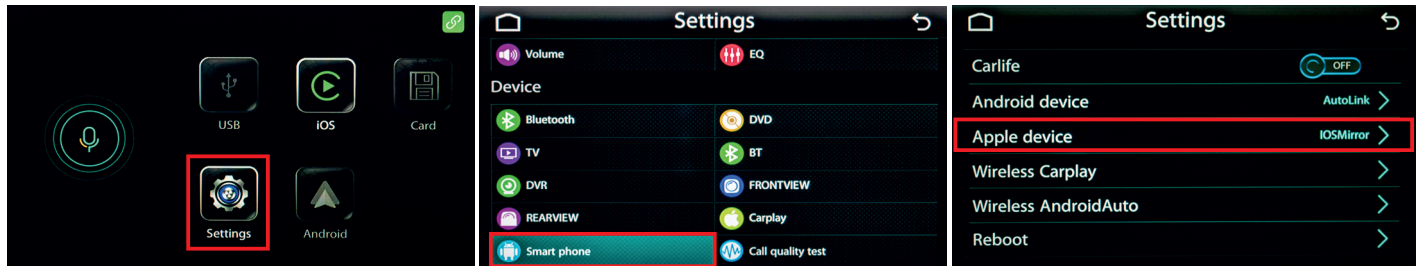
Karten



Waze

## AirPlay instruction

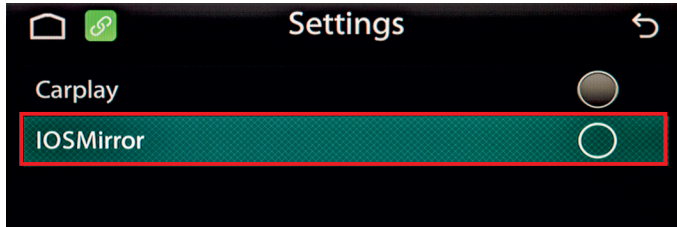
1. Click in the main menu on option “Settings”> “Smartphone”> “Apple Device”.



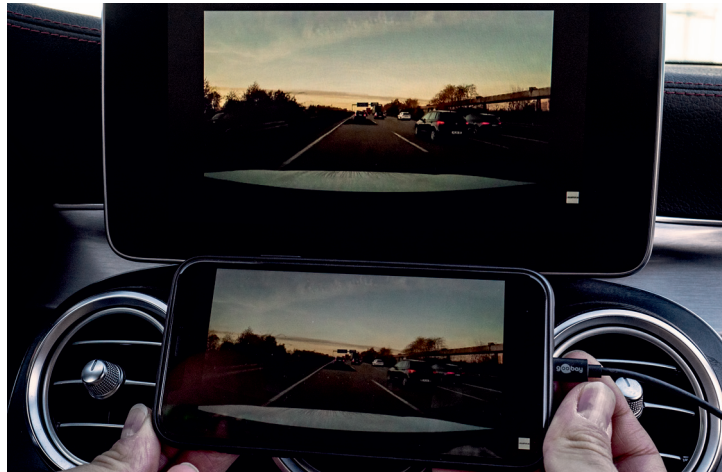
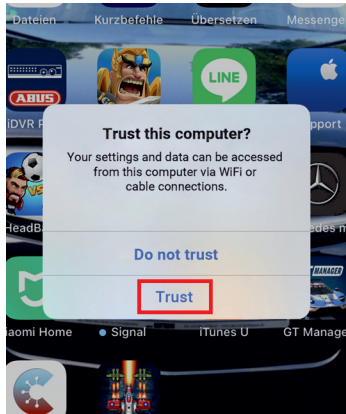


## AirPlay instruction

2. Now select "IOSMirror".

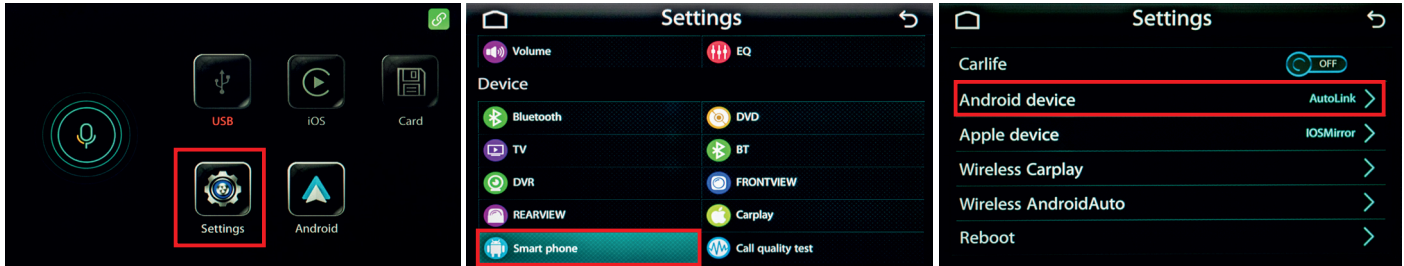


3. After selecting IOSMirror, connect the Apple data cable (original cable) to the USB cable installed in the main unit, it will appear on the phone as shown in the picture. Click "Trust", and Airplay will work successfully.

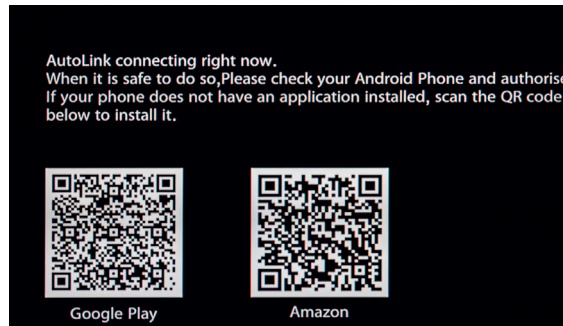
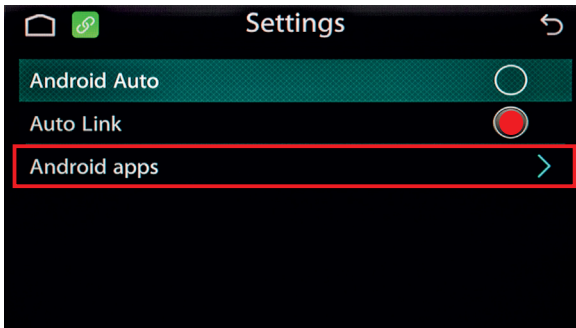


# Andriod Phone Mirror instruction

1. Click in the Main menu on option "Settings" > "Smartphone"> "Android device".

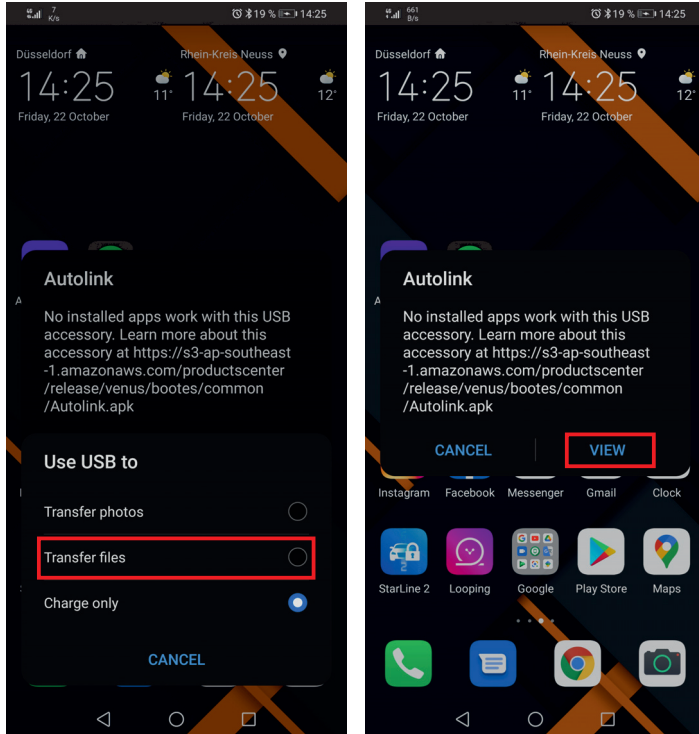


2. Select Auto Link, then click the Android APP to scan the QR code to download and install the Auto Link APP (download with the third-party browser) as shown in the figure below:



## Andriod Phone Mirror instruction

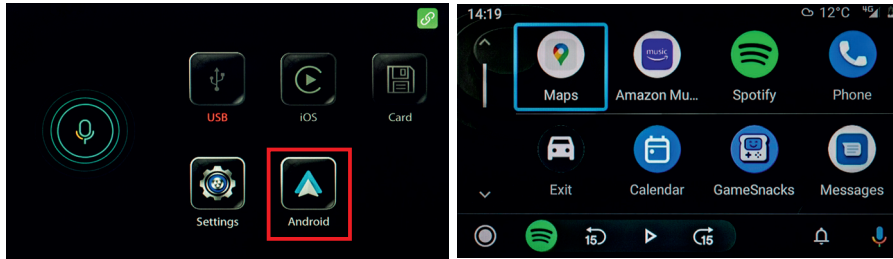
3. After the installation, connect the installed USB cable with the android data cable (original cable) and connect to the phone. Then, according to the prompts on the phone end, click transfer file and allow, as shown in the picture.



4. After completing the above operation, the mobile phone was successfully projected onto the vehicle screen.

## Connect the Andriod Auto though USB

Download android auto on your Android phone; Click the Android auto icon from the main menu; Connect the phone with USB cable and wait for the connection to be successful, as shown in the picture below:



## USB HD Playback Function Introduction

1. Insert the USB drive into the USB cable, and the main page of the car screen will light the USB icon to light blue,as shown in the picture:



2. Click to enter, and you can select audio, video and picture insertion, as shown in the picture:



### Remark:

Video supported formats: MPG. MPEG. DAT. Mp4. 3gp. MOV. Rm. RAM. Rm vb.

Audio supported formats: MP3. WMV. WAV. Mid

## Remark

### Remark:

► Carplay is compatible the following iPhone models.

iPhone 12	iPhone Xs	iPhone 8 Plus	iPhone 6	iPhone 5
iPhone SE	iPhone Xs MAX	iPhone 7	iPhone 6 Plus	
iPhone 11 Pro	iPhone XR	iPhone 7 Plus	iPhone SE	
iPhone 11 Pro Max	iPhone X	iPhone 6s	iPhone 5s	
iPhone 11	iPhone 8	iPhone 6s Plus	iPhone 5c	

► Andriod Auto is for Android phone running Android 5.0 (Lollipop) and up with a data plan. For best performance, we recommend Android 6.0 (Marshmallow) and up. You can check your phone's software version by looking at the About Device section under Settings.Wireless Andriod Auto is compatible with the following andriod phone only:Pixel, Nexus, or Samsung phones with Android versions shown below:

Telefon Marke und Modell	Android Version
Pixel oder Pixel XL	Andriod 8.0 oder höher
Pixel 2 oder Pixel 2 XL	Andriod 8.0 oder höher
Pixel 3 oder Pixel 3 XL	Andriod 8.0 oder höher
Nexus 5X oder 6P	Andriod 8.0 oder höher
Samsung Galaxy S8 oder S8+	Andriod 9.0 oder höher
Samsung Galaxy S9 oder S9+	Andriod 9.0 oder höher
Samsung Galaxy S10 oder S10+	Andriod 9.0 oder höher
Samsung Note 8, Note 9 ans Note 10	Andriod 9.0 oder höher

**Different cars with different wiring diagrams as follow,pls check them carefully before installation.If you have any question,pls contact us.**

## Technical specifications

---

Operating voltage	9-16 VDC (typically 12V)
Current consumption	421 mA
Quiescent current	1.4 mA
Transmission frequency	2.4MHz
Transmission power	>100mW EIRP (sum power)

